



# MAPLEWOOD SCHOOL

## REFERENDUM PROJECT UPDATE

### CONSTRUCTION UPDATE

#### What's Happening Now at Maplewood School?

- Exterior wall paneling is being put up around the school.
- Carpeting is being laid throughout different areas of the building.
- Classroom casework is being completed on both floors.

#### What's Coming Next at Maplewood School?

- More painting on the interior in various parts of the school.
- Completion of plumbing fixtures and floor tile.
- Progress to the installation of the cooler and freezer in the production kitchen.



View of the southeast side of the school where composite wall panel installation is in progress.



Metal girt system and metal coping installation is progressing.

#### Construction Keywords Glossary

**Metal girt system:** System of typically-horizontal metal bars that run between columns in walls.

**Terrazzo flooring:** Flooring material consisting of chips of marble or granite set in concrete that is then polished.

**Gyp board:** Short for "gypsum board"; plaster-based walled finish that is the primary ingredient of standard drywall products.

**Mudding:** The process of applying multiple thin coats of drywall compound to joints and screw indentations in newly placed drywall.



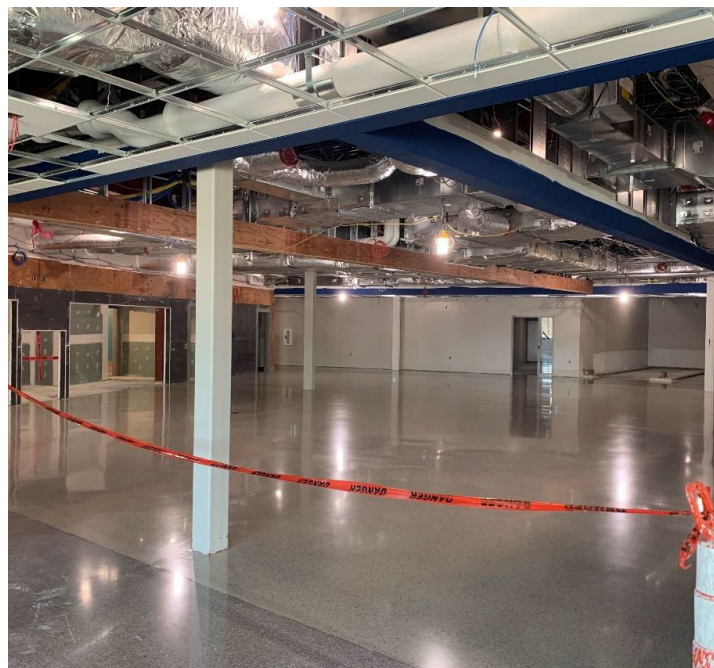


# MAPLEWOOD SCHOOL REFERENDUM PROJECT UPDATE

## PROGRESS PHOTOS



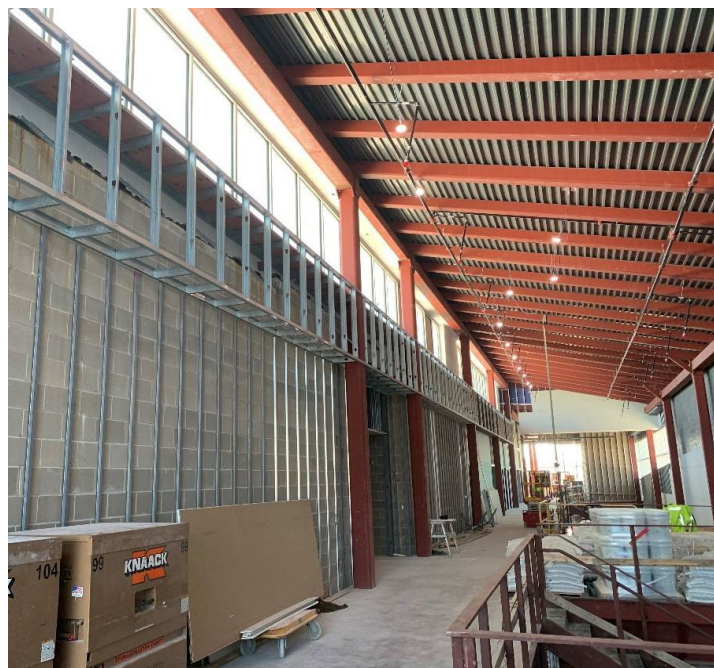
Carpeting and sliding glass doors are in place on the second floor.



Terrazzo flooring in the second-floor flex café is being sealed.



Gyp board taping and mudding in the first-floor flex café is in progress.



Interior metal stud framing at the building's center spine.